

**CT DEEP**                      **2017**  
**FISHING REPORT NUMBER 13**  
**7/6/2017**



Largemouth Bass (*Micropterus salmoides*)



**YOU CAN FIND US DIRECTLY ON FACEBOOK.** This page features a variety of information on fishing, hunting, and wildlife watching in Connecticut. The address is [www.facebook.com/CTFishandWildlife](http://www.facebook.com/CTFishandWildlife).



## INLAND REPORT

**LARGEMOUTH BASS** fishing is good in most areas. Places to try include Congamond Lakes (some nice catches recently, including 6+lb and 5+lb bass for one angler), Lake Saltonstall, Lake McDonough, Highland Lake, Winchester Lake, Bantam Lake, Candlewood Lake (try in 5-15 feet of water), Lake Wononskopomuc, Batterson Park Pond, Black Pond (Meriden), Breakneck Pond (great hike in location), Mansfield Hollow Reservoir, Griggs Pond, Lake Waramaug, West Hill Pond, Park Pond, Crystal Lake (Ellington), Gardner Lake, Moodus Reservoir, Stillwater Pond, Winchester Lake, Squantz Pond, Maltby Lake 2 & 3, Wood Creek Pond, Pachaug Pond, Ball Pond, Quonnipaug Lake, Silver Lake (Meriden) and Halls Pond.

**Tournament angler** reports are from Lake of Isles (fair to good, 2.91 lb lunker), Mansfield Hollow Reservoir (fair action, but with some nice size, average fish weight was 1.8 lbs, with 4 fish over 4 lbs, including a 5.13 lb lunker for one club, slightly better action for a second club, but average weight was less, 1.6 lbs per fish, with a 4.8 lb lunker), Pachaug Pond (fair, 3.65 lb lunker), Highland Lake (good fishing for most, 3.82 lb lunker), Lake Lillinonah (hard work finding fish, 4.65 lb lunker), and Lake Wononskopomuc (fair to good, 3.12 lb lunker).

**SMALLMOUTH BASS** fishing continues to be slow in many lakes and ponds. Places to try include Candlewood Lake (anglers are finding some action), Mashapaug Lake, Colebrook River Lake, Lake McDonough, Beach Pond, Lake Lillinonah and Lake Zoar. Fishing for river smallmouth is good in the Housatonic River, and should be picking up in other rivers such as the Naugatuck River and Quinebaug River. **Tournament angler** reports are from Highland Lake (few caught), and Lake Lillinonah (slow, 3.22 lb lunker).

**NORTHERN PIKE.** Some pike are being caught, with reports from Lake Lillinonah and Bantam Lake. Other pike waters to try include Mansfield Hollow Reservoir, Quaddick Lake (try up in Stump Pond), Hopeville Pond, the Connecticut River, the small impoundments along the upper Housatonic River, and Winchester Lake. Weedlines early and late in the day typically hold pike.

### REMINDER TO ANGLERS-

**FISHING IN OR CASTING INTO PERMITTED SWIM AREAS IS PROHIBITED.**

State regulations prohibit fishing in or into a swim area that has been permitted by DEEP. Additionally, vessels cannot be operated within a permitted swim area, and there's a 100 foot "no-wake" zone around the perimeter. Swim areas that have been permitted by DEEP will be marked by white buoys with orange markings, and there should be a permit number posted on the buoys. They may or may not have small orange barrier floats to further demarcate the area. Should questions arise concerning the validity of the swim area (*no permit numbers or the area appears to have been changed/enlarged or keeps moving*), please contact DEEP's Boating Division at 860-434-8638.



**WALLEYE.** Cedar Lake (action early morning & late in the day), Squantz Pond (beginning to slow, but still a number of catches) and Gardner Lake (“a few”) are reporting some action. Other locations to try include Batterson Park Pond, Beach Pond, Mount Tom Pond, Mashapaug Lake, Saugatuck Reservoir and Lake Saltonstall.

**PANFISH:** Perch are eager to please. Try going super small with a jig, Rapala, or mealworm floated under a bobber. Black Crappie are providing some good fishing throughout the state. It’s summer and sunnie fishing is very good.

**KOKANEE** are being caught at East Twin Lake (mostly 12 inch fish with some 14 inchers) and West Hill Pond. Try Beads, Mooselook Wobblers, DB Smelt, and Flash King lures (blue & silver); or fishing corn over lights at night.

**CATFISH** are providing some nice catches in the Connecticut River and Lake Wintergreen. Try live shiners, chunk bait, or night crawlers.

**TROUT- RIVERS & STREAMS** – Flow and temperatures continue to be favorable for trout and trout anglers this spring and early summer. The lack of long bouts of significant heat and the mostly normal to above normal stream flow (*see stream flow graphic on page 5*) are keeping trout spread throughout our rivers. Good photos and reports statewide, with fly anglers finding trout on the West Branch Farmington River, Farmington River, Housatonic River, Salmon River, Natchaug River, Willimantic River, Farm River (some “good size” brooks and browns have been found) and the Hammonasset River.

**Farmington River** – The upper section of the Farmington River TMA from Hogback Dam (Goodwin Dam) to the old bridge abutments (upper boundary for the year-round catch-and-release area) was stocked with 2,000 large (12+ inches) Cortland Browns on June 30. The fishing should be to be very good to excellent. West Branch flows are clear, moderate and quite fishable (currently 272 CFS at Riverton, with the Still River at 38 CFS). Water temperatures have been in the low 50’s °F below the dam to the mid 60’s °F by Collinsville.

**Rock Snot** is “blooming”. *Cymbella janischii* is a close relative of *Didymo* and has been introduced to the West Branch Farmington River (first noticed in 2011). *C. janischii* is native to the Pacific Northwest and not naturally found on the Eastern seaboard.

Currently this type of “Rock Snot” is very abundant and



**ZEBRA MUSSELS REMINDER**

**Zebra mussels are now found in a number of locations scattered throughout the Housatonic River and its impoundments including Lake Lillinonah (since 2010), Lake Zoar (since 2010) and Lake Housatonic (since 2011).**

Prior to their discovery in Lakes Lillinonah and Zoar in 2010, zebra mussels had been found (1998) in CT only in East Twin Lake and West Twin Lake (Salisbury). Anglers fishing in any of these waters and western Connecticut in general **should use extra care to avoid transporting water, aquatic vegetation, and possibly zebra mussels to new locations.** Information

For more information including precautions that should be taken to prevent the spread of zebra mussels to additional waters, visit [www.ct.gov/deep/invasivespecies](http://www.ct.gov/deep/invasivespecies) or the Aquatic Invasive species section of the 2017 CT angler’s Guide ([www.ct.gov/deep/anglersguide](http://www.ct.gov/deep/anglersguide)).



***Cymbella janischii* (rock snot) as observed on June 14, 2017 in the West Branch Farmington River, Barkhamsted (see also Notes & Notices)**

should continue to grow through July. The primary area of the river is from New Hartford upstream to Riverton. Note: Didymo is still present primarily in the West Branch above the Still River in Riverton. To help prevent the spread to other rivers and streams, all anglers should take extra care to clean and dry waders that have been in contact with rock snot. We recommend having a pair just for use only in the Farmington River.

**Hatches/patterns** include Isonychia (#10-12, some moving up into the year-round C & R area), Vitreus (#16-18, from 5:00 pm to dark, Riverton area), Tan Caddis (#16-18, good all day), Sulfurs, (Invaria #16-18, hatches mid-day and Dorothea #16-18) Light Cahill (#10-14), March Brown nymphs (#10-12), Gray Fox (#14, afternoon), Blue Wing Olives (#18-24, mid-late afternoon), Caddis (tan #14-18, all day; green #22-26, evening), Midges (#20-32), Blue Quill (#16-18) and Pale Evening Duns (*Epeorus vitreus* #16-18, afternoon and early evenings) and the ole reliable red and black ant. Hatches have been best in the evening. Streamers are also good at times (early and late, or when cloudy).

**Housatonic River** - Conditions for fishing should be very good again this weekend. Flows are a bit below typical levels for early July, currently 423 CFS at Falls Village and 619 CFS at Gaylordsville) and are perfect for wading. Morning water temperatures remain favorable for trout and are in the middle to upper 60's°F.

**Hatches/patterns** include Alder/Zebra Caddis (#8-10, Alder flies are very active during hot days), Sulphurs (#14-18, evening), Blue Wing Olive (#16-18, cloudy days, early morning; spinner fall in evening), *Isonychia* (#10-12 late afternoon & evening, just starting), Light Cahill (#12-14, evenings), Adams (#12-16, evening), March Brown (#10-12, afternoon) and Gray Foxes (#14-16). Black Caddis, and Green caddis (#16-18, early morning & evening). Streamers fishing and nymphing with big stoneflies have been very productive.

**TROUT-LAKES & PONDS** - Trout fishing is variable, with some action reported from Candlewood Lake (fish are being found deeper), Lake McDonough (very good last weekend, including a 20 fish day for one boat), Saugatuck Reservoir (a couple of 5-6 lb trout reported), West Hill Pond, Crystal Lake, Cedar Lake, and East Twin Lake (a few being trolled up).

**CONNECTICUT RIVER.** The river has dropped significantly since last Monday's highs, but is still somewhat higher than typical levels for early July. The river, however, is very turbid with lots of "debris" still reported, and some anglers would find it not that fishable or, in the upper river, very "boat-able". Schoolie **STRIPED BASS** have thinned out. Most action, especially for keepers will be back towards the sound. The mouth continues to have fair action from shore at the DEEP Old Lyme boardwalk. **CHANNEL CATFISH/WHITE CATFISH** have picked up again last week. **WHITE PERCH** were being found in the coves (grass shrimp, pieces of worms are working). **SMALLMOUTH BASS** fishing had been good in the Enfield area with a number of anglers keeping busy there.

**NO FISHING**  
 WITHIN 100 FEET OF THIS SIGN  
 JUNE 15- SEPTEMBER 15

Connecticut Department of Energy & Environmental Protection  
 Bureau of Natural Resources - Inland Fisheries Division  
 www.ct.gov/deep/fishing

To Report Fishing Violations  
 Call: 1-800-842-4357

**Anglers are reminded that the thermal refuge areas on the Housatonic, Naugatuck and Shetucket Rivers are now closed to fishing (as of June 15). These areas will reopen on September 15. There is no fishing within 100 feet of signs indicating such closure at or near the mouths of tributaries to these rivers.**

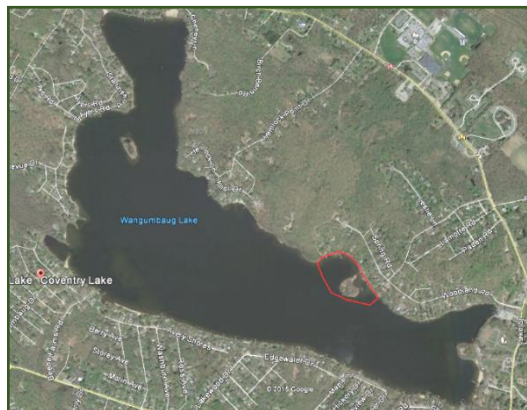
## NOTES & NOTICES:

**CONNECTICUT RIVER, Hartford area (fireworks).** The 2017 “Riverfest” is scheduled for this Saturday, July 8 with a fireworks display scheduled for 9 pm. The river in the Hartford area can be expected to be congested, with restrictions on navigational access to the area of the fireworks barges.

**CONNECTICUT RIVER (invasive species alert).** Hydrilla was recently found in the main stem Connecticut River in Glastonbury (near Glastonbury’s Riverfront Park & Boathouse). See the Coventry Lake entry below for what river users should do to prevent spread of this invasive plant to other waterbodies.

**COVENTRY LAKE (invasive species alert).** Hydrilla, a very highly invasive aquatic plant, has been found growing in Coventry Lake. All lake users should take extra care to check and clean their boats (including canoes, kayaks and rowing sculls), trailers, and fishing equipment before leaving the boat launch, or leaving the lakeshore.

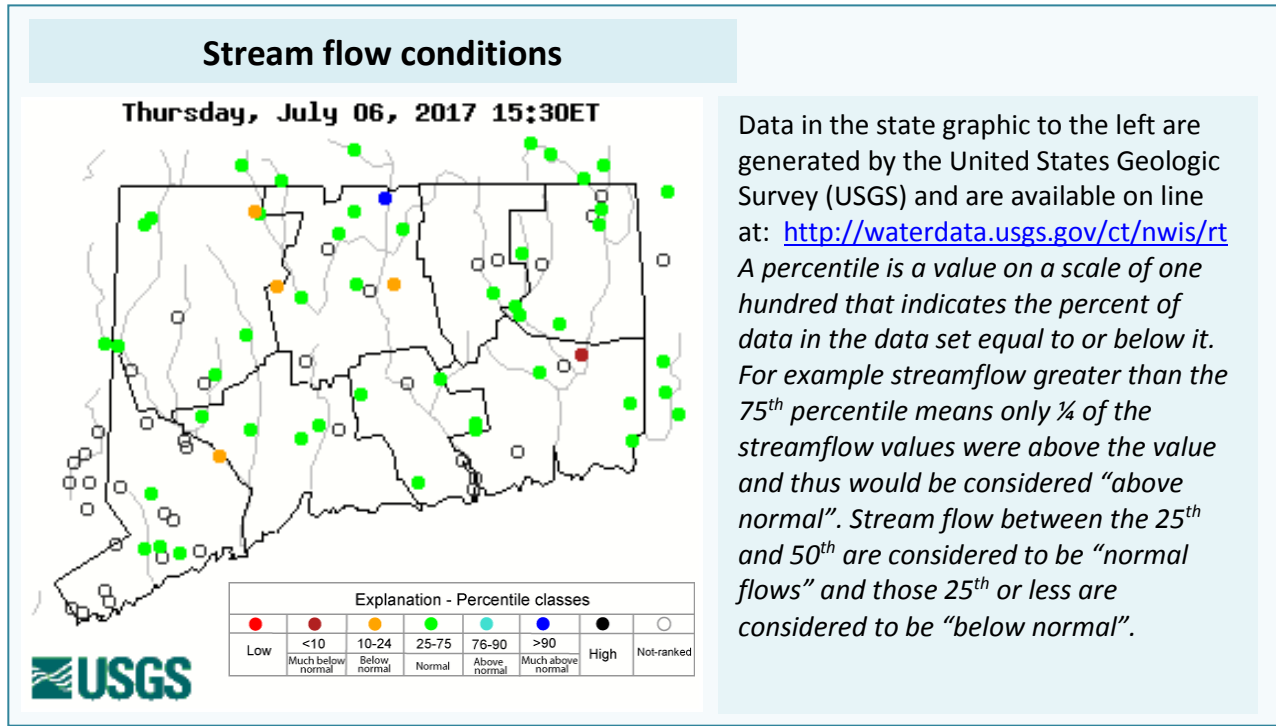
*Coventry Lake (Wangumbaug Lake) boaters should avoid the area outlined in red to avoid fragmenting and spreading hydrilla. This is only area in the lake where hydrilla has been found.*



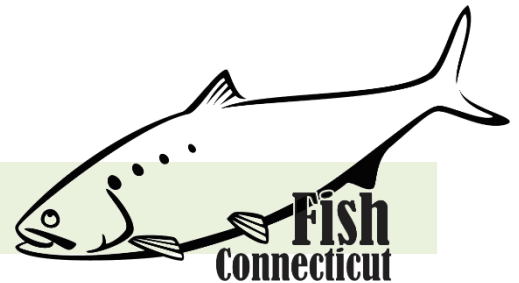
**WEST BRANCH FARMINGTON RIVER (invasive species alert).** *Cymbella janischii* is a close relative of *Didymo* and has been introduced to the West Branch Farmington River (first noticed in 2011). *C. janischii* is native to the Pacific Northwest and not naturally found on the Eastern seaboard. Currently this type of “Rock Snot” is very abundant and should continue to grow through July. The primary area of the river is from New Hartford upstream to Riverton. Note: *Didymo* is still present primarily in the West Branch above the Still River in Riverton. To help prevent the spread to other rivers and streams, all anglers should take extra care to clean and dry waders that have been in contact with rock snot. We recommend having a pair just for use only in the Farmington River.

**LAKE HOUSATONIC (fireworks display).** A fireworks display is scheduled for Sunday evening, July 8, in the vicinity of 32 Birchbank Road, Shelton.

**THAMES RIVER (fireworks display – Groton-New London).** The annual fireworks display is scheduled for Saturday evening (actual fireworks display is from 9:15 pm to 10:00 pm), July 8 on the river in Groton-New London. Expect congestion in nearby portions off the river and a closed safety area.



## MARINE FISHING REPORT



Surface water temperatures in Long Island Sound (LIS) are in the mid to high 60's °F. Check out the following web sites for more detailed water temperatures and marine boating conditions:

<http://www.mysound.uconn.edu/stationstat.html>

[http://marine.rutgers.edu/mrs/sat\\_data/?nothumbs=1](http://marine.rutgers.edu/mrs/sat_data/?nothumbs=1)

<http://www.ndbc.noaa.gov/>

<http://www.wunderground.com/MAR/AN/330.html>

**IMPORTANT NOTE to ANGLERS:** there are many reports of **leaping sturgeon** in the lower CT River (Essex to Old Saybrook). A common spring behavior for these **endangered fish species (Atlantic and shortnose)**...as they attempt to gulp air for their primitive swim bladder. Anglers are incidentally snagging or catching these sturgeon while bottom fishing. Please release all sturgeon with unavoidable harm as their populations are slowly recovering and are at VERY low levels. They are a protected species.

**Connecticut State Boundary Line in Long Island Sound.** Anglers please note: Though Connecticut has reciprocity with neighboring states (New York, Rhode Island, Maine and Massachusetts), residents of Connecticut are required to have a CT Resident Marine Waters or All Waters Sport Fishing License to fish in the Marine District.

**LICENSE RECIPROCALITY & CT RESIDENTS: Anglers please note:** Although Connecticut has reciprocity with neighboring states (New York, Rhode Island, Maine and Massachusetts), residents of Connecticut are required to have a CT Resident Marine Waters or all-Waters Sport Fishing License to fish in the Marine District.

**STRIPED BASS** fishing should improve with "Buck" full moon. But once the sun sets and darkness arrives – the striped bass are on the prowl. Stripers again have been coming into shore at night to feed. They are also catching some real nice keeper bass at the **Weather Buoy in front of Oyster Bay**. These cow bass are gulping fresh bunker and bunker spoons with some 50 pound bass and larger being caught. Penfield Reef, Middleground, BH Buoy and Sunken Island have been producing. As they say try "bunker dunkin at Sunkin." These bass have been gulping up FRESH bunker and live eels. Six inch Tsunamis, Talking Poppers and Heddon Superspooks have also been outstanding performers for striped bass. The Morningside area of Milford, Walnut Beach, Gulf Beach Pier and the Milford Audubon Society have been excellent locations for catching that trophy-sized striped bass. **Dawn and dusk is prime time for large stripers on the reefs, rip areas and lower coastal tidal rivers. Live lining eels, bunker or hickory shad has been the ticket.** Striper areas include the Watch Hill reefs, lower Thames River, the Race, Plum Gut, Pigeon Rip, outer Bartlett Reef, Black Point, Hatchett Reef, lower Connecticut River (Great Island), Long Sand Shoal, Cornfield Point, Southwest Reef (outer), Westbrook, Six Mile Reef, Falkner Island area, the reefs off Branford, New Haven Harbor (including Sandy Point), Charles Island area, Housatonic River, buoys 18 and 20 off Stratford Point, Stratford Shoal/Middle Ground, Bridgeport Harbor, Penfield Reef, around the Norwalk Islands, and Cable and Anchor Reef. Shore locations include...**Connecticut River by Dock and Dine and the DEEP Marine Headquarters fishing pier**

**SUMMER FLOUNDER** (fluke) fishing is improving and has also been fairly good at Woodmont, Gulf and Walnut beach areas. Although this past week fluke fishing has been slow on both sides of the Sound (NY & CT) there have been some impressive reports coming in of doormat-sized fluke being caught using Gulp Alive, spearing, squid attached to a bucktail using a high-low rig. Another winning spot this week for fluke has been buoy 20 off the Housatonic. Mid to western LIS anglers are still reporting good numbers of sub-legal sized fish and a few keepers mixed in, up to 7 pounds. (Norwalk/Stratford/New Haven/Woodmont area). Fluke spots include south shore of Fishers Island (Isabella Beach, Wilderness Point), Watch Hill to Napatree Point, off the Stonington breakwater, mouth of the Mystic River to Groton Long Point, Thames River channel, Gardiners Bay over to Greenport, NY, Twotree Channel, Black Point/Niantic Bay/River, Long Sand Shoal, Westbrook-Clinton area, Falkner Island area, New Haven Harbor to West Haven, off the mouth of the Housatonic River, Norwalk Islands, and across over to Port Jefferson, NY. **Minimum size is 19 inches and the daily creel limit is 3 fish per person.** Time to get the boat, and fishing gear ready for some phenomenal early season fluke fishing. [CT Bait & Tackleshop List](#)

**BLACK SEA BASS** fishing is good. The Middleground is still producing some decent sized fish. The green can "C" off of Stratford Shoal Lighthouse in 35'-45' of water can land you several 20" fish when using a high-low rig with heavy clam chum on the bottom. Squid and spearing also attracting these delicious beauties. Fishing has also been very good this past week off of Buds Reef and buoy 28-C, buoy 32-A and buoy 38 off of Rye, NY's Playland Amusement Park. Black Sea Bass prefer FRESH clams. Remember, **CT black sea bass regulations are as follows...15 inch min. length, 5 fish daily limit from May 1<sup>st</sup> to December 31<sup>st</sup>.** Berkely Gulp (swimming mullet) on a jig along with squid and a spinner works great for these "Bucketmouths".

**SCUP** (porgy) fishing is very good in Long Island Sound. Hook up with your local party/charter boat to get into some of the best fishing ever! These scup are very large and delicious to eat! Nice sized scup have been caught at **Penfield Reef, Jennings Beach, Sunken Island, Buds Reef, buoy 32-A, Buoy 38 (off Playland), and The Wall in Stratford, Saint Marys by the Sea, Pleasure Beach Family Pier, Sherwood**

**Island State Park and South Benson in Fairfield.** Parking at South Benson is free if you park adjacent to the gate guard house. Seriously, try fishing for some “reef slammers” and enjoy some great fishing...there are lots of scup around for all. **Scup have been the prime target of shore anglers in Milford this week, and with great success.** Scup have been preferring sand worms but squid and clams are working as well. **Scup fishing has also been exceptional when using a high-low rig, and they are eating up clams in deep water.** Hot spots also include Todds Point, Seaside Park, Saint Marys by the Sea, Pleasure Beach Family Pier, Fort Nathan Hale and Sherwood Island State Park. Porgy fishing has also been reported at these shore fishing locations: Mystic River Park, UCONN Avery Point, Rocky Neck State Park, **Harkness Memorial State Park**, Meigs Point Hammonasset State Park and **Fort Trumbull State Park**. Locate your favorite [Enhanced Shore Fishing Opportunities](#) for these hard fighting and excellent eating “Reef Slammers”. These “panfish of the sea” are easily caught on sandworms/cut squid or any other small piece of bait. Contact your [local bait and tackle shop](#) for updated fishing information.

**WEAKFISH** fishing continues to keep on getting better with good numbers of 20-28 inch size fish being caught in the central and eastern Sound (West Haven beaches). Central and western Sound catches are improving as the population rebounds. Good fishing in Niantic, New Haven Harbor by the breakwaters over to Woodmont/Milford Point and along Stratford shoals. **Weakfish prefer sand worms and clams at low light and dusk.** One of the best eating saltwater fish you will ever catch.

**BLUEFISH** fishing continues to be excellent. Blues are coming in close to shore and have been hitting diamond jigs and trolling lures. A lot of Blues have been caught near the **Norwalk Islands**. Try Calf Pasture Pier as well. The Race, **Millstone Outflow**, Plum Gut and the north side of Long Island including Gardiners Bay and the Peconics are the hotspots. **Most of the local Long Island Sound reefs have many harbor-sized blues cruising around them.** Bluefish schools have been scattered, sometimes mixed in with striped bass during the day in deeper water, sometimes arriving inshore during daylight hours. These “shark wannabes” will eat just about anything and they are real fun to catch. With WICC's Greatest Bluefish Contest on Earth coming up, now is the time to start scouting good fishing locations.

**STRIPED SEAROBIN** fishing is awesome in LIS. These beautiful and strange looking fish are now very common especially when bottom fishing at many of Connecticut's shore fishing sites. **Searobin are in abundance almost everywhere, and more and more anglers are realizing the somewhat tedious task of filleting them is well worth it - they are quite tasty.** They love sandworms, squid and any live or dead bait. They are also very good to eat. Please be careful when handling them...be mindful of their spines located on top of their head and gill cover. Searobins are very good eating.

#### SHORE FISHING SPOTS & TIDE TABLE INFORMATION

To find a saltwater shore fishing spot close to where you live, go to the following website:

<http://www.lisrc.uconn.edu/coastalaccess/>.

For **Enhanced Opportunity Shore Fishing** sites and other fishing information including a site map go to the following website

<http://www.depdata.ct.gov/maps/saltwaterfish/map.htm>.

Please see page 64 of the [2017 CT Angler's Guide](#) for CT tide information.

**BLACKFISH (TAUTOG)** fishing season is open in Connecticut waters. **The daily creel limit is 2 fish per person and the minimum size is 16 inches.** Tautog love eating crabs...try green, Asian and hermit crabs for bait. Look for tautog in shallow water as they begin spawning over shellfish beds. Other prime locations include: pilings with mussel beds and rock (reef) piles (5 to 30 ft).

**BLUE CRAB** are in the molting phase (sally crab) and becoming more active in the tidal creeks and rivers as the water warms up. **There appears to be a lot of smaller crabs out there...a good sign for a great**

**year of crabbing.** With a little time...there should be beaucoup blue crabs of legal size to catch. Please release sub-legal crabs with care. Also, please remember it's mating season for the crabs and release all egg-bearing females (sooks or lemon bellies). There are some large "jimmies" (male crabs) being captured (8.0 inches spike to spike) along with some impressive sooks. **Remember... all egg bearing females must be released without avoidable injury.** Minimum carapace length is 5 inches for a hard shell crab. Please contact your local bait and tackle shop for most updated information (local hot spots), legal crab traps and bait to use for your fun-filled crabbing. Legal gear types include: scoop (dip) net, hand line, star crab trap, circular (topless) trap not exceeding 26 inches in diameter. Maryland Style crab traps are prohibited. **Chicken with the skin on it (along with a long handle net) is the preferred method to capture these tasty crabs.** [Blue Crab Fact Sheet](#)

**NOTABLE CATCHES –**

<i>Species</i>	<i>Length (in.)</i>	<i>Weight (lbs)</i>	<i>Angler</i>
Sand Shark (Dogfish)	47"	C&R.	Joselin Braun
Summer Blue Crab	8"	1 lb 1 oz	Mason DeCarlo

**CAUGHT A TROPHY FISH - MARINE TROPHY FISH AWARD PROGRAM AFFIDAVIT**

The Connecticut Department of Energy and Environmental Protection is an Affirmative Action/Equal Opportunity Employer that is committed to complying with the requirements of the Americans with Disabilities Act. Please contact us at (860) 418-5910 or [deep.accommodations@ct.gov](mailto:deep.accommodations@ct.gov) if you have a disability and need a communication aid or service; have limited proficiency in English and may need information in another language; or if you wish to file an ADA or Title VI discrimination complaint.

**DEEP WEEKLY Fishing Report**



**Connecticut Department of  
ENERGY & ENVIRONMENTAL PROTECTION**

79 Elm Street, Hartford, CT 06106

[www.ct.gov/deep](http://www.ct.gov/deep)